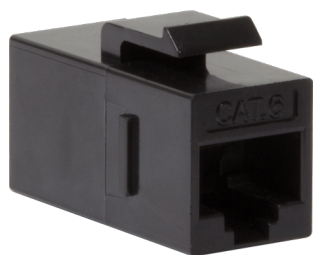


Keystone Coupler



Key Features :

- 2 x RJ45 Jack with gold plated pins.
- Snap-in mounting for patchpanel, outlet etc.
- Pin Configuration 1:1
- Complies with ISO/IEC 11801 and EIA/TIA 568-C
- Selling unit : polybag 24 pcs
- weight : 7 gr
- Class E - 250 MHz
- Unshielded
- Supports PoE, PoE+ and PoE++

Order Information

Order code :

LKJ CUTPC6 C6 UTP (24 pcs) EAN : 5904014200621

