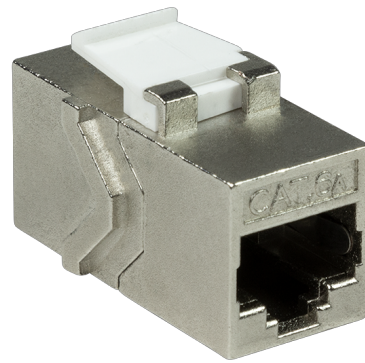
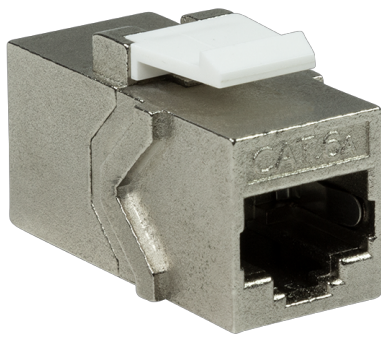


# Keystone Coupler

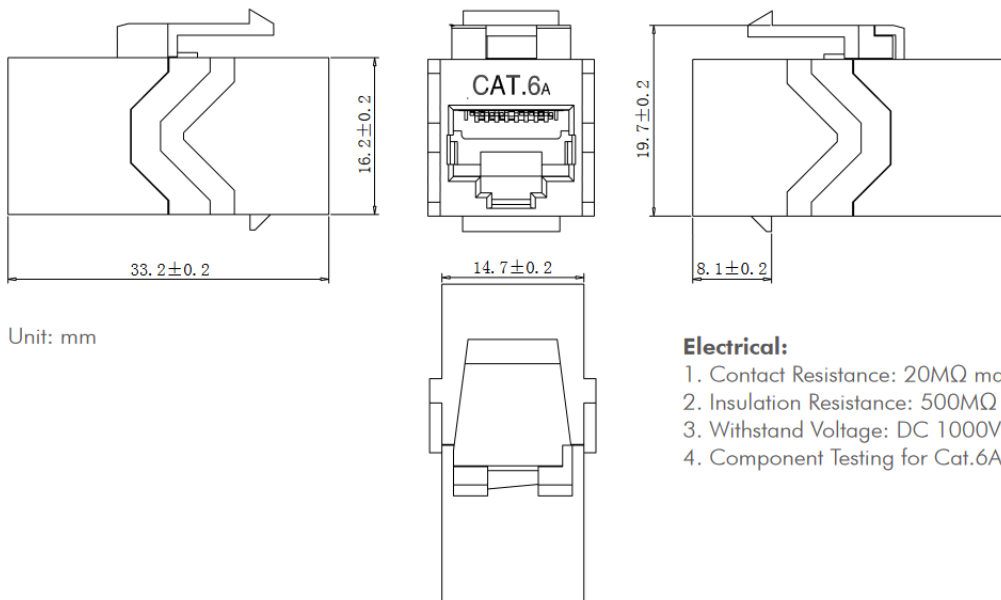


## Key Features :

- 2 x RJ45 Jack with gold plated pins.
- Snap-in mounting for patchpanel, outlet etc.
- Pin Configuration 1:1
- Selling unit : polybag 24 pcs
- Supports PoE, PoE+ and PoE++
- weight : 21 gr
- Class E - 500 MHz, ISO/IEC 11801 & EIA/TIA 568C
- Shielded
- Solid zinc die-cast housing
- slim type 33 x 17.1 x 22.2 mm only

## Order Information

Order code : **LKJCFTPC6A**      C6A FTP (24 pcs)      EAN : 5904014200645



## Environmental:

1. Storage: -40° ~ 70°
2. Operation: -10° ~ 60°

## Mechanical:

1. RJ45 Contact Life: 750 times min.
2. Plug Inforce: <30N

## Electrical:

1. Contact Resistance: 20MΩ max.
2. Insulation Resistance: 500MΩ min.@500V DC
3. Withstand Voltage: DC 1000V AC 700V RMS 60Hz, 1MIN
4. Component Testing for Cat.6A to ISO/IEC 11801 Ed.2.2: 2011-06  
DIN EN 50173-1:2011-09  
TIA/EIA-568-C.2 (2009-08)